

PDD10-D Series

10 Watt Dual Outputs DC/DC Converter

Features

- Approved to IEC/EN60950, UL60950 safety standards
- Industry standard footprint: 2"x1"x0.4" (50.80 x 25.40 x 10.16mm³)
- Typical efficiency: 81%
- 2:1 wide input voltage range: 9-18V, 18-36V, 36-75V
- Dual outputs: $\pm 5V$, $\pm 12V$, $\pm 15V$
- Remote control (for V_{in} 48V)
- No minimum load requirement
- Output over-current protection (for V_{in} 48V, V_{out} $\pm 5V$)
- Isolation voltage: 1500Vdc, 1min (Input-Output; Input-Case; Output-Case)

Environmental

- Operating ambient temperature range: -40°C to 55°C
- Operating board temperature range: -40°C to 100°C
- Storage temperature range: -55°C to 125°C
- Temperature coefficient: $< \pm 0.02\%/^{\circ}C$
- MTBF: > 2 million hrs

Electrical Specifications

Input

Input range: 9-18V, 18-36V, 36-75V

Output

Voltage setpoint accuracy: $\pm 1.0\%V_o$ max

Line regulation: 0.2% V_o max

Load regulation: 0.5% V_o max

Over-current protection: continuous, auto-recovery

Ripple and noise: $< 50mV_{pp}$ max.

Transient response: 300mV max

Recovery $< 200\mu s$ max
(25%~50%~25% I_{omax})

di/dt : 1A/10 μs

Control

Control voltage:

Positive logic

High = on 3.5 to 15Vdc

Low = off -0.7 to 1.5Vdc

Negative logic

Low = on -0.7 to 1.5Vdc

High = off 3.5 to 15Vdc

Control current:

2mA max (for positive logic)

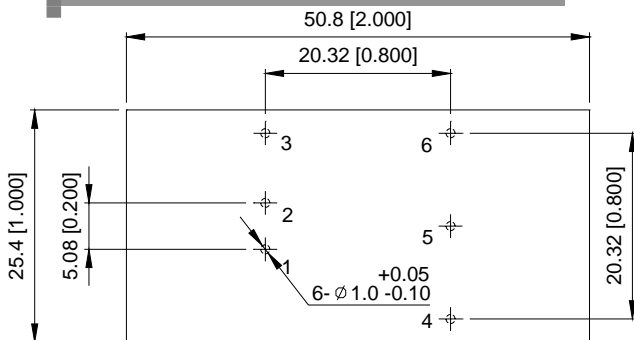
4mA max (for negative logic)



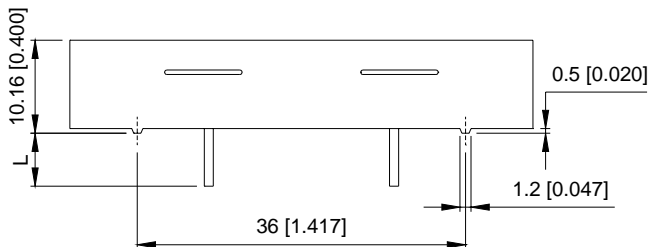
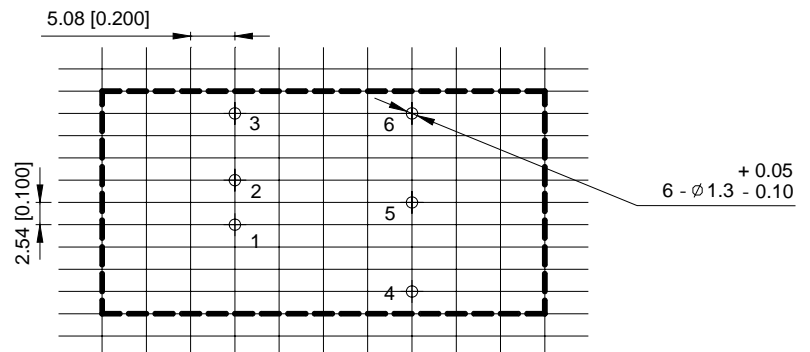
Ordering Information

Input Voltage	Output Voltage	Output Current	Efficiency	Model Number
12V	±5V	1A	80%	PDD10-12D05
12V	±12V	0.42A	81%	PDD10-12D12
12V	±15V	0.33A	81%	PDD10-12D15
24V	±5V	1A	81%	PDD10-24D05
24V	±12V	0.42A	82%	PDD10-24D12
24V	±15V	0.33A	82%	PDD10-24D15
48V	±5V	1A	80%	PDD10-48D05
48V	±12V	0.42A	83%	PDD10-48D12
48V	±15V	0.33A	83%	PDD10-48D15

Dimensions



TOP View



Pin Assignments

- | | |
|---|------------|
| 1 | +Vin |
| 2 | -Vin |
| 3 | NC(or CNT) |
| 4 | +Vo |
| 5 | COM |
| 6 | -Vo |

Pin Length: 5.8mm

TOLERANCES: X.Xmm=+/-0.5mm
X.XXmm=+/-0.25mm

Unit:mm[inch]