

60W Series dual output switching power supply

D-60 Series



Dimension: 159 × 97 × 38mm

Features:

- Universal AC input / Full range
- Small volume, low weight, high efficiency
- Protections : short circuit/over load/over voltage
- Cooling by free air convection
- LED indicator for power on
- 100% full load burn-in test
- 1 Year warranty

SPECIFICATION

| Model | | D-60A | | D-60B | | D-60C | |
|--------------|---------------------------|--|----------|---------|----------|----------|----------|
| Output | DC voltage | CH1:5V | CH2:12V | CH1:5V | CH2:24V | CH1:12V | CH2:24V |
| | Voltage tolerance | ± 2% | +4%□-8% | ± 3% | +6%□-8% | ± 3% | +6%□-8% |
| | Rated current | 4A | 3A | 3A | 1.8A | 2A | 1.5A |
| | Current range | 0.8□4A | 0.3□3A | 0.8□3A | 0.2□1.8A | 0.5□2A | 0.2□1.5A |
| | Rated power | 56W | | 58W | | 60W | |
| | Ripple&noise | 80mVp-p | 100mVp-p | 80mVp-p | 120mVp-p | 100mVp-p | 120mVp-p |
| | DC voltage ADJ. range | CH1: -9%~+10% | | | | | |
| | Setup, rise, hold up time | 600ms,50ms,30ms/230VAC. | | | | | |
| Input | Voltage range | 90 ~ 264VAC 47 ~ 63Hz, 127 ~ 373VDC | | | | | |
| | AC current | 1.8A/115V 0.9A/230VAC | | | | | |
| | Efficiency | 74% | | 76% | | 78% | |
| | Inrush current | Cold start 25A/115V 50A/230VAC | | | | | |
| | leakage current | < 2mA/240VAC | | | | | |
| Protection | Overload | Rated output power110% ~ 150%Start overload protection Protection type: hiccup mode, auto-recovery after fault condition is removed | | | | | |
| | Over voltage | CH1:115% ~ 135% Protection type: hiccup mode, auto-recovery after fault condition is removed | | | | | |
| Environment | Working temp, humidity | -10°C ~ +60°C;20% ~ 90%RH(Please refer to "derating curve") | | | | | |
| | Storage temp, humidity | -20°C ~ +85°C;10% ~ 95%RH Non-condensing | | | | | |
| | Withstand vibration | 10 ~ 500Hz, 2G 10min./1Cycle, Period for 60min, Each axes | | | | | |
| Safety | Withstand voltage | I/P-O/P: 1.5KVAC I/P-FG: 1.5KVAC O/P-FG: 0.5KVAC | | | | | |
| | Isolation resistance | I/P-O/P: I/P-FG,O/P-FG: 100M Ohms/500VDC | | | | | |
| Fit standard | Safety standard | Fit UL1012 | | | | | |
| | EMC Standard | Fit EN55022, CLASSA | | | | | |
| Others | Dimension | 0.55kg 159*97*38mm (L*W*H) | | | | | |
| | Weight | 0.55kg/45pcs/25.5kg/1.45CUFT | | | | | |

Note: 1. All parameters NOT specially mentioned are measured at 230VAC input, rated load and 25°C of ambient temperature.

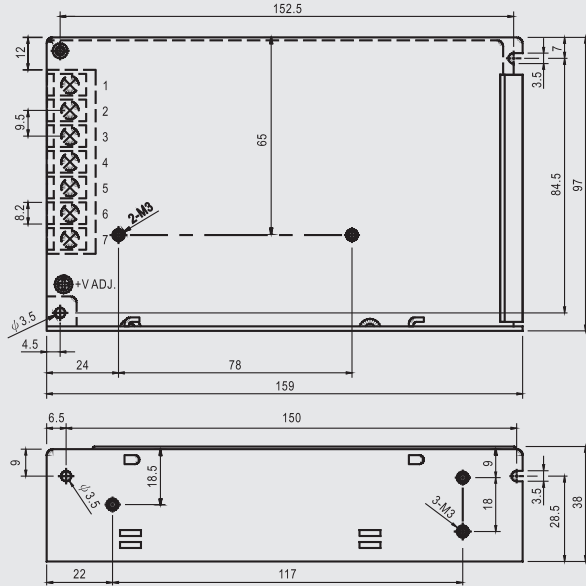
2. Ripple & noise are measured at 20MHz of bandwidth by using a 12" twisted pair-wire terminated with a 0.1uf & 47uf parallel capacitor.

3. Tolerance : includes set up tolerance, line regulation and load regulation.

D-60W Series dual output switching power supply

Mechanical specification

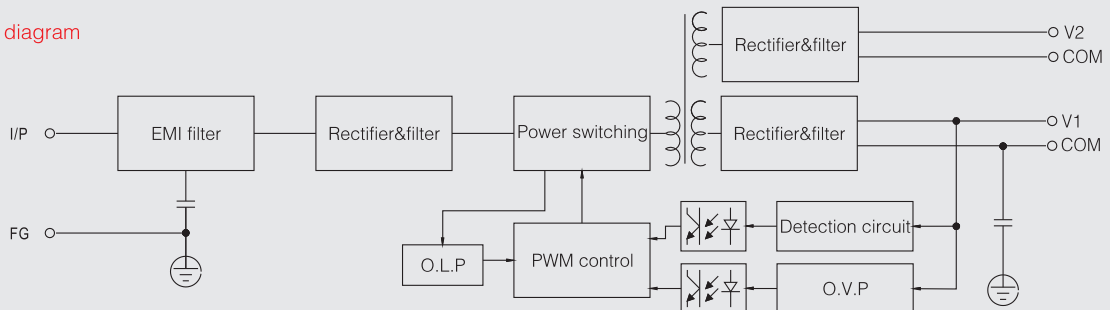
Unit:mm



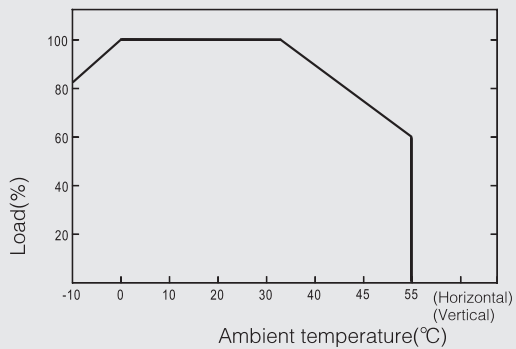
Terminal Pin No. Assignment

| Pin No. | Assignment | Pin No. | Assignment |
|---------|------------|---------|---------------|
| 1 | AC/L | 4 | DC OUTPUT V2 |
| 2 | AC/N | 5 | DC OUTPUT V1 |
| 3 | FG \perp | 6 | DC OUTPUT COM |
| | | 7 | DC OUTPUT COM |

Block diagram



Derating curve



Static characteristic

