

PDS15 Series

15 Watt Single Output DC/DC Converter

Features

- Approved to IEC/EN60950, UL60950 safety standards
- Industry standard footprint: 1.65"x1.46"x0.4" (41.90x37.10x10.16mm³)
- Typical efficiency: 82%, for 5V_{out}
- 2:1 wide input voltage range: 36-75V
- Single output: 3.3V, 5V, 12V, 15V
- Remote control
- Input under-voltage shutdown
- No minimum load requirement
- Output over-current; short-circuit protection (not commended for V_{out} 12V, 15V)
- Isolation voltage: 1500V_{dc}, 1min (Input-Output; Input-Case; Output-Case)

Environmental

- Operating ambient temperature range: -40°C to 55°C
- Operating board temperature range: -40°C to 100°C
- Storage temperature range: -55°C to 125°C
- Temperature coefficient: $\lt; \pm 0.02\%/^{\circ}\text{C}$
- MTBF: >2 million hrs

Electrical Specifications

Input

Input range:	36-75V
Input under-voltage shutdown:	32-34V

Output

Voltage setpoint accuracy:	$\pm 1.0\%V_o$ max
Voltage adjust:	None
Line regulation:	10mV max
Load regulation:	25mV max
Over-current protection:	>120%I _o , auto-recovery
Short-circuit protection:	Continuous, auto-recovery
Ripple and noise:	$\lt; 60\text{mVpp}$ max.
Transient response:	200mV max Recovery $\lt; 400\mu\text{s}$ max (25%~50%~25% I _o max) di/dt: 1A/10 μs

Control

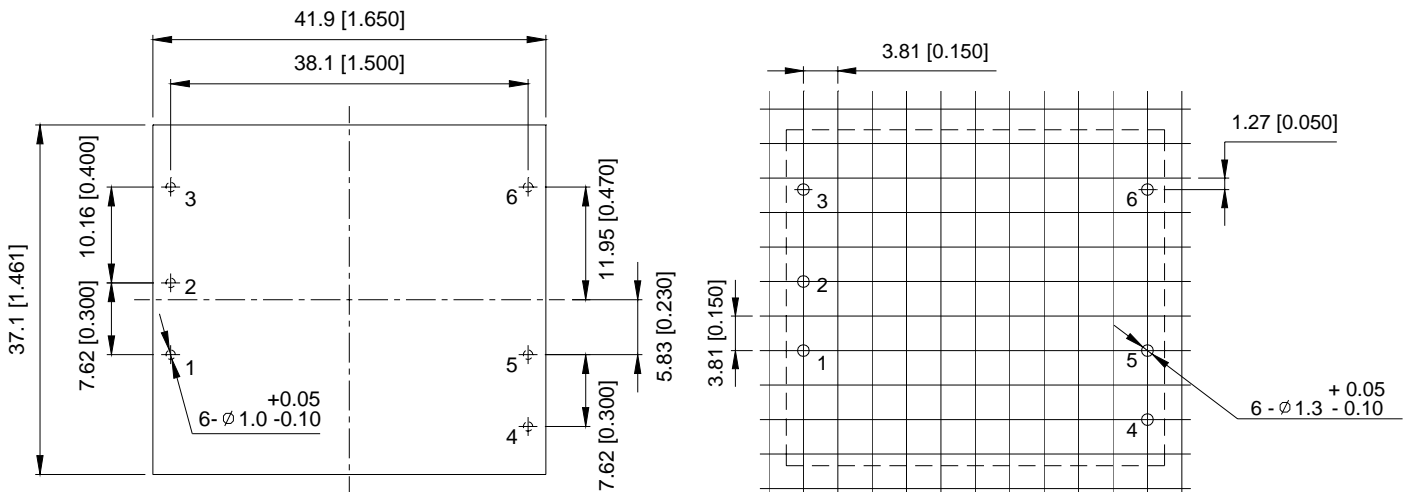
Control voltage:	
Positive logic	
High = on	3.5 to 12V _{dc}
Low = off	-0.7 to 0.6V _{dc}
Control current:	2mA max



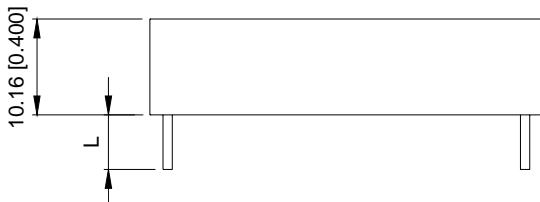
Ordering Information

Input Voltage	Output Voltage	Output Current	Efficiency	Model Number
48V	3.3V	3.5A	78%	PDS15-48S3V3
48V	5V	3A	82%	PDS15-48S05
48V	12V	1.25A	84%	PDS15-48S12
48V	15V	1A	85%	PDS15-48S15

Dimensions



Top View



TOLERANCES: X.Xmm=+/-0.5mm
X.XXmm=+/-0.25mm

Unit:mm[inch]

Pin Assignments

- 1 +Vin
- 2 -Vin
- 3 CNT
- 4 -Vo
- 5 +Vo
- 6 NC

Pin Length: 5.8mm