



■ Features:

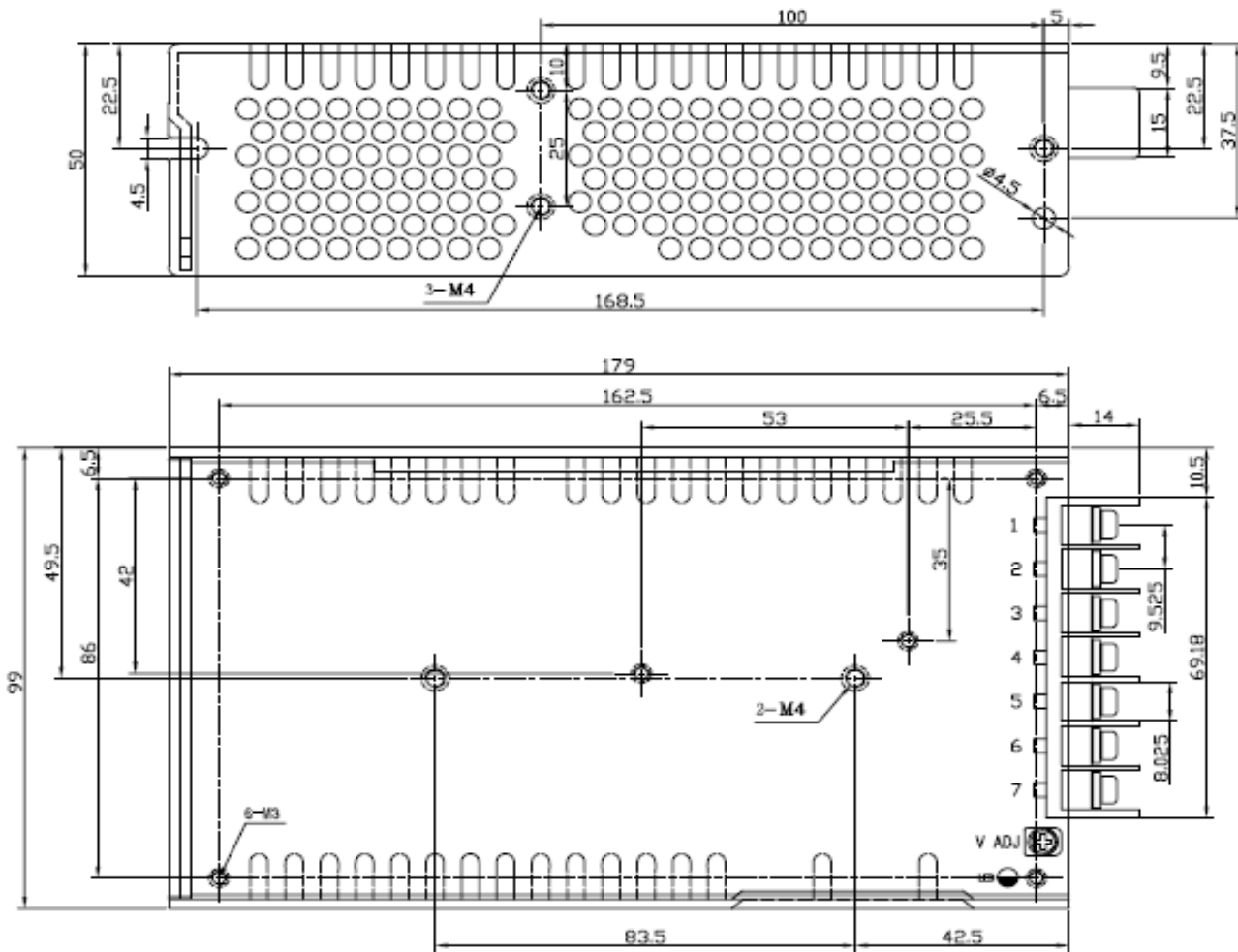
- Universal AC input/ Full range
- Built-in active PFC function, PF>0.93
- High Efficiency, and High reliability
- Output protections: SCP/OVP/OPP/OLP
- All using 105°C long life electrolytic capacitors.
- 100% full load burn-in test
- 2 years warranty

SPECIFICATION

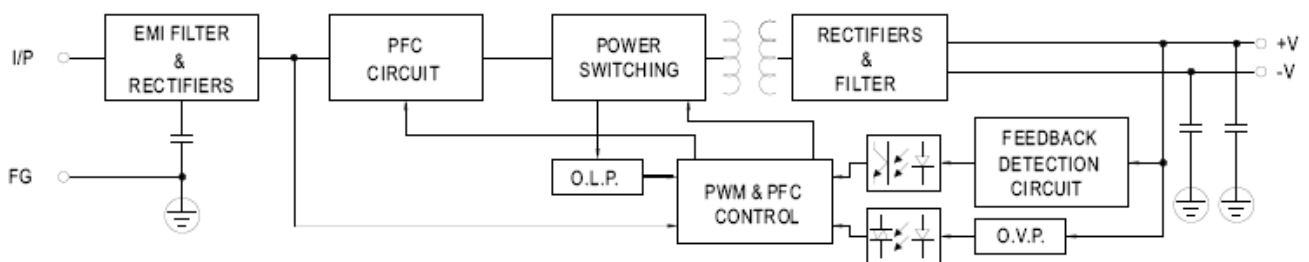
MODEL		PDF-100-5	PDF-100-12	PDF-100-15	PDF-100-24	PDF-100-48	
OUTPUT	DC Output	5.0V	12V	15V	24V	48V	
	Rated Current	20A	8.5A	6.7A	4.2A	2.15A	
	Current Range Note 1	0~20A	0~8.5A	0~6.7A	0~4.2A	0~2.15A	
	Ripple and Noise Note 2	100mV	100mV	100mV	150mV	250mV	
	Voltage ADJ. Range	4.0V~5.9V	10V~14V	13.5V~17.0V	20V~28V	43V~55V	
	Voltage Accuracy	±2.0%	±2.0%	±2.0%	±1.0%	±1.0%	
	Line Regulation	±0.5%	±0.5%	±0.5%	±0.5%	±0.5%	
	Load Regulation	±1.0%	±0.5%	±0.5%	±0.5%	±0.5%	
	Set-up Time	< 2.0S (230Vac input, Full load)					
	Hold up Time	> 20mS(230Vac input, Full load)					
	Temperature Coefficient	±0.03%/°C					
	Overshoot and Undershoot	<5.0%					
INPUT	Voltage Range	85Vac~264Vac 120~370VDC					
	Frequency Range	47Hz~63Hz					
	Power Factor(Typical)	PF>0.98/115VAC PF>0.93/230VAC					
	Efficiency (Typical)	120Vac input	78%	83%	83%	83%	84%
		230Vac input	80%	85%	85%	86%	87%
	AC Current (max.)	1.7A/115VAC 0.8A/230VAC					
	Inrush Current (Typical)	50A@230Vac Cold start					
Leakage Current	Input—output:<0.25mA Input—PG:<3.5mA						
PROTECTION	Over Power	105%~150% of rated output current, hiccup mode,auto recovery					
	Over Current	105%~150% of rated output current, hiccup mode, auto recovery					
	Over Voltage	110%~150% of rated output voltage, shut down,re-power on to recover					
	Shorted Circuit	Long-term mode, auto recovery					
ENVIRONMENT	Operating amb. Temp. & Hum.	-10°C~60°C; 20%~90%RH No condensing(refer to the derating curve)					
	Storage Temp. & Hum.	-20°C~85°C; 10%~95%RH No condensing					
SAFETY & EMC (Note 3)	Safety Standards	UL60950-1; EN60950-1: 2006					
	Withstand Voltage	Primary-Secondary:3.0KVac; ≤10mA .Primary-PG:1.5KVac; ≤10mA. Secondary-PG:0.5KVDC; ≤10mA.					
	Isolation Resistance	≥100M ohms					
	EMI Conduction&Radiation	Compliance to EN55022(CISPR22)ClassB					
	Harmonic Current	Compliance to EN61000-3-2,17625.1-2003					
EMS Immunity	Compliance to EN61000-4-2,3,4,5,6,8,11;ENV50204,light industry level,criteriaA						
OTHERS	MTBF (MIL-HDBK-217F)	More than 100,000Hrs (25°C, Full load)					
	Dimension (L*W*H)	194×99×50mm					
	Packing	20PCS/CTN. G.W: 15.2kgs					
	Cooling method	Cooling by free air convection					
NOTE	<ol style="list-style-type: none"> 1. All parameters NOT specially mentioned are measured at rated input, rated load and 25°C of ambient temperature. 2. Measured at 20MHz of bandwidth by using a 12" twisted pair-wire terminated with a 0.1 uF & 47uF parallel capacitor. 3. The SPS is considered a component which will be installed into final equipment. The equipment must be re-confirmed that it still meets EMC directives. 						

Mechanical Specification

Unit: mm



Block Diagram



Derating Curve

