



■ Features:

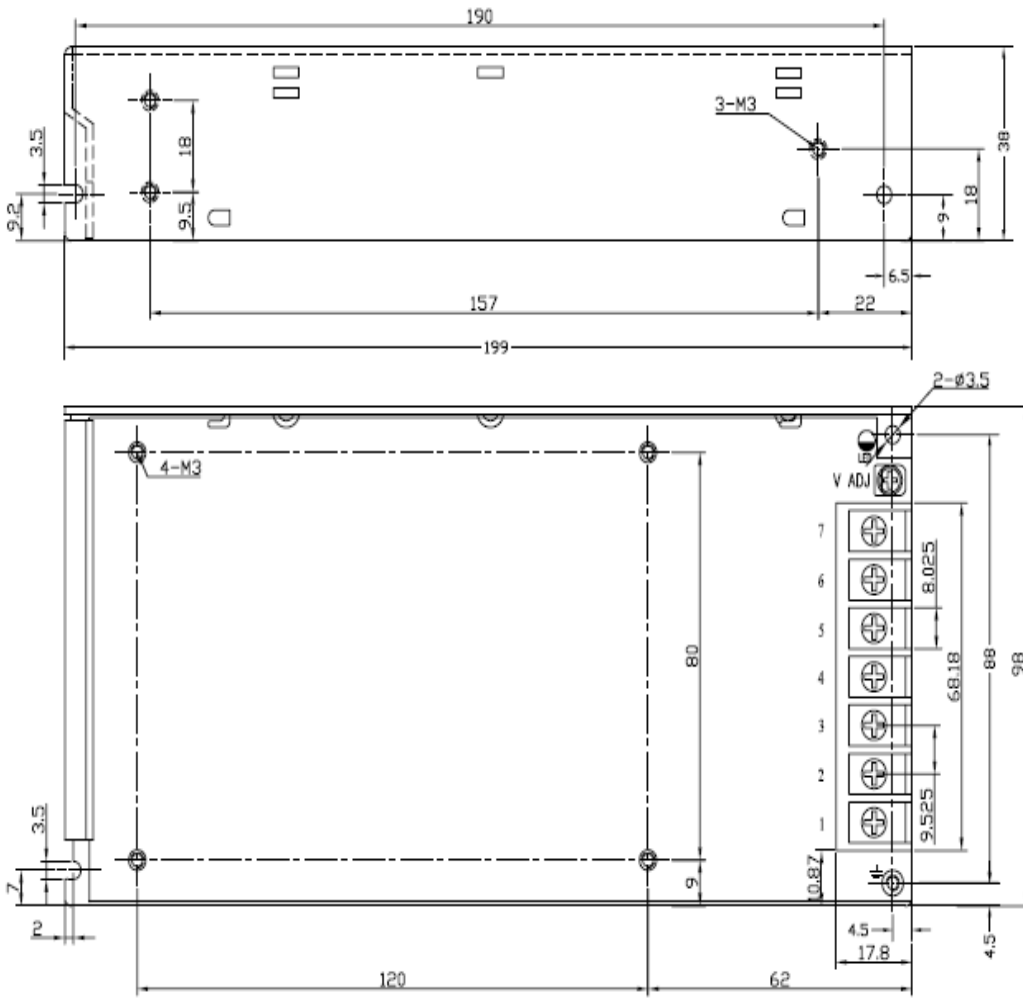
- Universal AC input/ Full range
- High Efficiency, and High reliability
- Output protections: SCP/OVP/OPP/OLP
- Wide operating ambient temperature (-20°C~70°C)
- All using 105°C long life electrolytic capacitors.
- 100% full load burn-in test
- 3 years warranty

SPECIFICATION

MODEL		PD-150-5	PD-150-12	PD-150-15	PD-150-24	PD-150-48	
OUTPUT	DC Output	5V	12V	15V	24V	48V	
	Rated Current	26A	12.5A	10A	6.5 A	3.3A	
	Current Range	Note 1 0~26A	0~12.5A	0~10A	0~6.5A	0~3.3A	
	Ripple and Noise	0~70°C	80mV	120mV	120mV	120mV	200mV
		Note 2 -20°C	100mV	150 mV	180 mV	150 mV	300 mV
	Voltage ADJ. Range	4.2V-6.0V	10.0V-14.0V	13.0V-17.0V	21.0V-28.0V	43.0V-54.0V	
	Voltage Accuracy	±2.0%	±1.0%	±1.0%	±1.0%	±1.0%	
	Line Regulation/	±0.5%	±0.5%	±0.5%	±0.5%	±0.5%	
	Load Regulation	±1.0%	±1.0%	±1.0%	±1.0%	±1.0%	
	Set-up Time	<2.0S (120Vac input, Full load); <1.0S (230Vac input, Full load)					
	Hold up Time	>10mS(120Vac input, Full load); >20mS(230Vac input, Full load)					
Temperature Coefficient	±0.03%/°C(0°C~50°C)						
Overshoot and Undershoot	<5.0%						
INPUT	Voltage Range	Note 3 88Vac/176Vac~132Vac/264Vac					
	Frequency Range	47Hz~63Hz					
	Efficiency (Typical)	120Vac input	78%	83%	83%	84%	85%
		230Vac input	79%	83%	84%	85%	86%
	AC Current (max.)	≤3.5A/2.0A					
	Inrush Current (Typical)	20A@120Vac 40A@230Vac Cold start					
Leakage Current	<0.25mA/120Vac <2.0mA/230Vac						
PROTECTION	Over Power	105%~150% of rated output current, Constant power, hiccup mode, auto recovery					
	Over Current	105%~150% of rated output current, Constant power, hiccup mode, auto recovery					
	Over Voltage	120%~150% of rated output voltage, shut down, re-power on to recover					
	Shorted Circuit	Long-term mode, auto recovery					
ENVIRONMENT	Operating amb. Temp. & Hum.	-20°C~70°C; 20%~90%RH No condensing(refer to the derating curve)					
	Storage Temp. & Hum.	-40°C~85°C; 10%~95%RH No condensing					
SAFETY & EMC (Note 4)	Safety Standards	UL60950-1; EN60950-1: 2006					
	Withstand Voltage	Primary-Secondary:3.0KVac; ≤10mA .Primary-PG:1.5KVac; ≤10mA. Secondary-PG:0.5KVDC; ≤10mA.					
	Isolation Resistance	≥100M ohms					
	EMI Conduction&Radiation	Compliance to EN55022(CISPR22)ClassB					
	Harmonic Current	Compliance to EN61000-3-2,-3					
EMs Immunity	Compliance to EN61000-4-2,3,4,5,6,8,11;ENV50204,light industry level,criteriaA						
OTHERS	MTBF (MIL-HDBK-217F)	More than 100,000Hrs (25°C , Full load)					
	Dimension (L*W*H)	199×98×38mm					
	Packing	20PCS/CTN, G.W:15kgs					
	Cooling method	Cooling by free air convection					
NOTE	<ol style="list-style-type: none"> 1. All parameters NOT specially mentioned are measured at rated input, rated load and 25°C of ambient temperature. 2. Measured at 20MHz of bandwidth by using a 12" twisted pair-wire terminated with a 0.1 uF & 47uF parallel capacitor. 3. AC input range selected by switch. 4. The SPS is considered a component which will be installed into final equipment. The equipment must be re-confirmed that it still meets EMC directives. 						

■ Mechanical Specification

Unit: mm



Pin No.	Assignment
1	AC-L
2	AC-N
3	F.G
4.5	DC output -V
6.7	DC output +V

■ Derating Curve

