



■ Features:

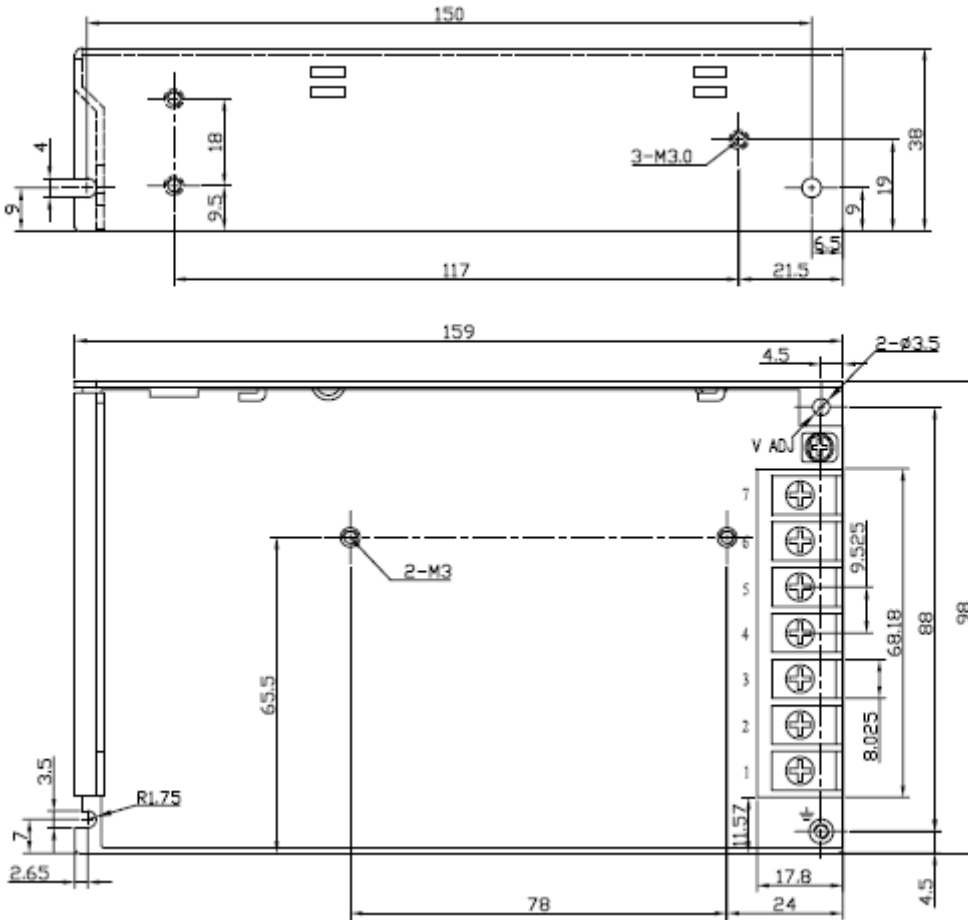
- Universal AC input/ Full range
- High Efficiency, and High reliability
- Output protections: SCP/OVP/OPP/OLP
- Wide operating ambient temperature (-20°C ~70°C)
- All using 105°C long life electrolytic capacitors.
- 100% full load burn-in test
- 2 years warranty

**SPECIFICATION**

MODEL		PD-100-5	PD-100-12	PD-100-15	PD-100-24	PD-100-48	
OUTPUT	DC Output	5.0V	12.0V	15.0V	24.0V	48.V	
	Rated Current	16A	8.5A	7A	4.5 A	2.3A	
	Current Range	Note 1 0~16A	0~8.5A	0~7.0A	0~4.5A	0~2.3A	
	Ripple and Noise	0~70°C	80mV	100mV	100mV	120mV	200mV
		Note 2 -20~0°C	120mV	120mV	120mV	120mV	200 mV
	Voltage ADJ. Range	4.2V-6.0	10.4V-13.6V	13.0V-17.0V	21.0V-28.0V	43.0V-54.0V	
	Voltage Accuracy	±2.0%	±1.0%	±1.0%	±1.0%	±1.0%	
	Line Regulation	±0.5%	±0.5%	±0.5%	±0.5%	±0.5%	
	Load Regulation	±1.0%	±1.0%	±1.0%	±1.0%	±1.0%	
	Set-up Time	<2.0S (120Vac input, Full load); <1.0S (230Vac input, Full load)					
	Hold up Time	>10mS(120Vac input, Full load); >20mS(230Vac input, Full load)					
	Temperature Coefficient	±0.03%/°C					
Overshoot and Undershoot	<5.0%						
INPUT	Voltage Range	90Vac~264Vac					
	Frequency Range	47Hz-63Hz					
	Efficiency ( Typical)	78%(120Vacinput)	79%(120Vacinput)	81%(120Vacinput)	84%(120Vacinput)	83%(120Vacinput)	
		79%(230Vacinput)	81%(230Vacinput)	83%(230Vacinput)	85%(230Vacinput)	84%(230Vacinput)	
	AC Current (max.)	2.0A	2.5A	2.5A	2.4A	2.5A	
	Inrush Current (Typical)	20A@120Vac 40A@230Vac Cold start					
Leakage Current	:<0.4Ma@120Vac <0.75mA@230Vac						
PROTECTION	Over Power	105%~150% of rated output current, Constant power, auto recovery					
	Over Current	105%~150% of rated output current, Constant power, auto recovery					
	Over Voltage	110%~140% of rated output voltage, auto recovery					
	Shorted Circuit	Long-term mode, auto recovery					
ENVIRONMENT	Operating amb. Temp. & Hum.	-20°C ~70°C; 20%~90%RH No condensing					
	Storage Temp. & Hum.	-20°C ~85°C; 10%~95%RH No condensing					
SAFETY &EMC (Note 3)	Safety Standards	GB4943-2001; EN60950-1: 2006					
	Withstand Voltage	Primary-Secondary:3.0KVac; ≤10mA .Primary-PG:1.5KVac; ≤10mA. Secondary-PG:0.5KVDC; ≤10mA.					
	Isolation Resistance	≥100M ohms					
	EMI Conduction&Radiation	Compliance to EN55022(CISPR22)ClassB					
	Harmonic Current	Compliance to EN61000-3-2,-3					
EMs Immunity	Compliance to EN61000-4-2,3,4,5,6,8,11;ENV50204,light industry level,criteriaA						
OTHERS	MTBF (MIL-HDBK-217F)	More than 100,000Hrs (25°C , Full load)					
	Dimension (L*W*H)	160×98×38mm					
	Packing	20PCS/CTN, G.W :13.6kgs					
	Cooling method	Cooling by free air convection					
NOTE	1. All parameters NOT specially mentioned are measured at rated input, rated load and 25°C of ambient temperature. 2. Measured at 20MHz of bandwidth by using a 12" twisted pair-wire terminated with a 0.1 uF & 47uF parallel capacitor 3. The SPS is considered a component which will be installed into final equipment. The equipment must be re-confirmed that it still meets EMC directives.						

**Mechanical Specification**

Unit: mm



Pin No.	Assignment
1	AC-L
2	AC-N
3	F.G
4.5	DC output -V
6.7	DC output +V

**Derating Curve**

